

On the attribution of stratospheric ozone and temperature changes to changes in ozone-depleting substances and well-mixed greenhouse gases

T. G. Shepherd and A. I. Jonsson

Department of Physics, University of Toronto, 60 St. George Street, Toronto, Ontario, M5S 1A7, Canada

Received: 15 August 2007 – Accepted: 15 August 2007 – Published: 21 August 2007

Correspondence to: T. G. Shepherd (tgs@atmosp.physics.utoronto.ca)

12327

Abstract

The vertical profile of global-mean stratospheric temperature changes has traditionally represented an important diagnostic for the attribution of the cooling effects of stratospheric ozone depletion and CO₂ increases. However, CO₂-induced cooling alters ozone abundance by perturbing ozone chemistry, thereby coupling the stratospheric ozone-temperature response to changes in CO₂ and ozone-depleting substances (ODSs). Here we untangle the ozone-temperature coupling and show that the attribution of global-mean stratospheric temperature changes to CO₂ and ODS changes (which are the true anthropogenic forcing agents) can be quite different from the traditional attribution to CO₂ and ozone changes. The significance of these effects is quantified empirically using simulations from a three-dimensional chemistry-climate model. The results confirm the essential validity of the traditional approach in attributing changes during the past period of rapid ODS increases, although we find that about 10% of the upper stratospheric ozone decrease from ODS increases over the period 1975–1995 was offset by the increase in CO₂, and the CO₂-induced cooling in the upper stratosphere has been somewhat overestimated. When considering ozone recovery, however, the ozone-temperature coupling is a first-order effect; fully 2/5 of the upper stratospheric ozone increase projected to occur from 2010–2040 is attributable to CO₂ increases. Thus, it has now become necessary to base attribution of global-mean stratospheric temperature changes on CO₂ and ODS changes rather than on CO₂ and ozone changes.

1 Introduction

The attribution of changes in atmospheric conditions to different anthropogenic forcings is an important problem in climate science. In the middle atmosphere, the global mean temperature is, to good approximation, in radiative balance (see e.g. Fig. 5 of Fomichev et al., 2002) and is thus controlled entirely by radiative processes; dynamical effects

12328

on temperature, such as those resulting from the Brewer-Dobson circulation, may be important over specific latitude bands but approximately cancel out in the global mean. This feature makes global-mean temperature a valuable diagnostic for attribution, and the vertical profile of its long-term changes has been much studied (e.g. Ramaswamy et al., 2001; Shine et al., 2003) as a key fingerprint of stratospheric ozone depletion.

Observations show that global-mean stratospheric cooling has occurred since 1979 (the beginning of the continuous satellite record, and coincidentally also the beginning of significant global ozone depletion) preferentially in the lower and the upper stratosphere. Numerous studies have shown that the cooling of the lower stratosphere has been mainly due to ozone depletion, while the cooling of the upper stratosphere has been due to both ozone depletion and CO₂ increases, roughly in equal measure (see Chap. 5 of WMO, 2007). But there is something fundamentally incorrect about this way of presenting the results. Stratospheric ozone is not an anthropogenic forcing agent, rather it is (like water vapour) an internal property of the atmosphere. For example, cooling of the upper stratosphere increases ozone abundance, by slowing ozone destruction rates, and the increased ozone abundance offsets some of the cooling (e.g. Haigh and Pyle, 1982). This ozone-temperature feedback has, therefore, mitigated the upper stratospheric cooling that would otherwise have occurred from the CO₂ changes alone (Jonsson et al., 2004).

The primary anthropogenic forcing agents for stratospheric ozone and temperature changes are ozone-depleting substances (ODSs) and CO₂. (The radiative impact of changes in other well-mixed greenhouse gases is small compared to that of CO₂ over most of the stratosphere; e.g. Shine et al., 2003). Because of the ozone-temperature feedback, the upper stratospheric ozone depletion due to ODSs has been partially masked by CO₂-induced ozone increases. It follows that using the observed ozone decreases to attribute global-mean temperature changes must *underestimate* the cooling due to ODSs (via ozone depletion), and *overestimate* the cooling due to CO₂ increases. While these considerations must surely be well known, they seem not to have been pointed out explicitly, nor the limitations of ozone-based attribution discussed –

12329

let alone quantified. However, this issue will become increasingly important in the future, as the ODS loading in the stratosphere begins to slowly decline and the attribution of stratospheric temperature changes will need to be more accurately performed as a diagnostic of ozone recovery from the effects of ODSs.

Beyond making the above statements, the purpose of this paper is two-fold: first, to demonstrate that it is possible to untangle the ozone-temperature feedback and separately attribute the ozone and temperature changes due to ODS and CO₂ changes (at least for small changes), contrasting them with what would be inferred from the “traditional” approach (e.g. WMO, 2007) based on ozone and CO₂; and, second, to use results from a three-dimensional chemistry-climate model to provide an empirical estimation of the ODS-CO₂ attribution of past and future changes.

2 Untangling the ozone-temperature feedback: attribution of stratospheric ozone and temperature changes to changes in ODSs and CO₂

We present a heuristic analysis of the ozone-temperature feedback and its implications for attribution. We do not consider heterogeneous chemistry, which means that this analysis is not relevant in the lowest part of the stratosphere. Since we are interested in long-term changes, we may assume steady-state conditions. Furthermore as we are, for the most part, interested in small perturbations (e.g. at the 10% level), we may neglect nonlinearities in the coefficients to a first approximation. Thus, all variables represent *perturbations* to some reference state. While the small-perturbation assumption is violated for the ODS perturbations, this does not compromise the analysis since the role of ODSs in the temperature dependence of the gas-phase chemical ozone loss is small (see e.g. Fig. 1.12 of IPCC/TEAP, 2005).

Stratospheric temperature responds to O₃ and CO₂ perturbations, which we can represent as follows:

$$\frac{\partial(\Delta T)}{\partial t} = 0 = a \Delta O_3 - b \Delta CO_2 - c \Delta T. \quad (1)$$

12330

The signs have been chosen such that a , b and c are all positive. The damping term represents radiative relaxation to the reference state (based on the background ozone and CO₂ distributions). Thus, ozone and CO₂ perturbations pull the temperature away from the reference state – increasing ozone warms the stratosphere by absorption of solar radiation, while increasing CO₂ cools it by infrared emission. At the same time, ozone responds to temperature and ODSs, which we can represent as follows:

$$\frac{\partial(\Delta O_3)}{\partial t} = 0 = -d \Delta ODS - e \Delta T - f \Delta O_3. \quad (2)$$

Once again the signs have been chosen such that d , e and f are all positive, and the damping term represents photochemical relaxation to the reference state. Thus, ODS and temperature perturbations pull ozone away from the reference state – increasing ODSs decreases stratospheric ozone by increasing the efficiency of those catalytic ozone-destruction cycles involving ODSs, while increasing temperature decreases it by increasing the efficiency of all catalytic ozone-destruction cycles.

The ozone-temperature feedback is represented by the coefficient e . If $e=0$, then (2) implies $\Delta O_3 = -(d/f) \Delta ODS$; in this case, ozone responds exclusively to ODSs and, in (1), affects temperature completely independently of CO₂, i.e. their effects are superposable. This is the assumption made in all current attribution studies (e.g. Shine et al., 2003; WMO, 2007). So the question at hand is, how important are the effects that come from having $e \neq 0$?

From (1) and (2) we obtain the relations

$$(ae + cf) \Delta O_3 = be \Delta CO_2 - cd \Delta ODS, \quad (3)$$

$$(ae + cf) \Delta T = -ad \Delta ODS - bf \Delta CO_2. \quad (4)$$

This – rather than (1)–(2) – is the more informative way to write the equations, since ozone and temperature are the internal variables which respond to the external forcings CO₂ and ODS. Equation (3) shows that ozone increases from CO₂ increases

12331

(through cooling) and decreases from ODS increases, while (4) shows that temperature decreases from ODS increases (through ozone loss) and from CO₂ increases. So these relations contain the key effects that we are interested in. And they are moreover *linear*; the effects of CO₂ and ODSs are superposable. So this way of writing things untangles the ozone-temperature feedback, making attribution clear-cut (in the limit of small perturbations).

We may note already that the effect of having $e \neq 0$ is to *increase* the magnitude of the coefficient on the left-hand side of both (3) and (4), which means that the ozone-temperature feedback *damps* both the ozone response to ODSs (because the decrease in ozone lowers the temperature, which increases ozone) and the temperature response to CO₂ (because the lower temperature increases ozone, which increases temperature). Moreover the magnitude of the damping effect is the same for both ozone and temperature.

Now, let us consider the temperature response to a CO₂ change, which from (4) is given by

$$\Delta T_{CO_2} = -\frac{bf}{ae + cf} \Delta CO_2. \quad (5)$$

We write $\Delta T_{CO_2}^R$ as the “radiative” estimate, with no ozone-temperature feedback (i.e. with $e=0$), namely

$$\Delta T_{CO_2}^R = -\frac{b}{c} \Delta CO_2. \quad (6)$$

Equation (5) is also derivable directly from (1) by setting $\Delta O_3=0$. It follows that

$$\frac{\Delta T_{CO_2}}{\Delta T_{CO_2}^R} = \frac{1}{1 + (ae/cf)}. \quad (7)$$

Thus, the temperature response to CO₂ is *overestimated* if the ozone-temperature feedback is not included. The physical interpretation of this result is that the temperature response to CO₂ changes is damped by the ozone-temperature feedback, as

12332

noted above. By comparing non-interactive and interactive responses to doubled CO₂ using the Canadian Middle Atmosphere Model, Jonsson et al. (2004) found that the overestimate can be as large as 30% in the upper stratosphere.

Now consider the temperature response to an ODS change, which from (4) is given by

$$\Delta T_{\text{ODS}} = -\frac{ad}{(ae + cf)} \Delta \text{ODS}. \quad (8)$$

As noted above, however, the current practice is to diagnose the temperature change due to ozone changes, with the implicit assumption that the latter are attributable to the ODS changes. We write $\Delta T_{\text{O}_3}^R$ for this ozone-based “estimate” of the ODS-induced temperature change, which from (1) is given by

$$\Delta T_{\text{O}_3}^R = \frac{a}{c} \Delta \text{O}_3. \quad (9)$$

Using (3) this can be expressed as

$$\Delta T_{\text{O}_3}^R = \frac{a/c}{(ae + cf)} (be \Delta \text{CO}_2 - cd \Delta \text{ODS}). \quad (10)$$

It follows that

$$\frac{\Delta T_{\text{ODS}}}{\Delta T_{\text{O}_3}^R} = -\frac{cd \Delta \text{ODS}}{(be \Delta \text{CO}_2 - cd \Delta \text{ODS})} = \frac{1}{1 - \frac{be \Delta \text{CO}_2}{cd \Delta \text{ODS}}}. \quad (11)$$

We see that the temperature response to ODS-induced ozone loss is currently *underestimated*. The physical interpretation of this result is that using observed ozone changes underestimates the effects of ODSs, because the increase in CO₂ has mitigated some of the ozone loss due to ODSs. In other words, ozone would have decreased more from ODSs (and led to more cooling) had it not been for the CO₂ increase. And since there is a minus sign in the denominator of (11), unlike in the case of (7), the underestimate could potentially be quite large.

12333

On the other hand, as ODS abundances begin to decrease in the future, then relative to current conditions $\Delta \text{ODS} < 0$ and (11) will become less than unity rather than greater than unity. In that case, estimating the temperature changes from the observed ozone changes through $\Delta T_{\text{O}_3}^R$ will overestimate the effect of ODSs (basically because part of the ozone increase will be the result of the CO₂ increase rather than the ODS decrease). So quantifying the effects properly will be an important aspect of the attribution of ozone recovery from the effects of ODSs.

It was noted above, in the discussion below (11), that the CO₂ increase has masked some fraction of the ozone depletion that would have occurred from the ODS increase. We can also quantify this effect. From (3) we have

$$\Delta \text{O}_3 = \frac{be \Delta \text{CO}_2 - cd \Delta \text{ODS}}{(ae + cf)}. \quad (12)$$

On the other hand, the ozone change that is actually attributable to the ODS change, which we denote by $\Delta \text{O}_{3 \text{ ODS}}$, is from (3) given by

$$\Delta \text{O}_{3 \text{ ODS}} = -\frac{cd}{(ae + cf)} \Delta \text{ODS}. \quad (13)$$

The ratio of the two is

$$\frac{\Delta \text{O}_{3 \text{ ODS}}}{\Delta \text{O}_3} = -\frac{cd \Delta \text{ODS}}{(be \Delta \text{CO}_2 - cd \Delta \text{ODS})} = \frac{1}{1 - \frac{be \Delta \text{CO}_2}{cd \Delta \text{ODS}}}, \quad (14)$$

which is exactly the same ratio as (11). Thus, this suggests that the ODS-induced ozone decrease in the upper stratosphere has been partially masked by the CO₂ increase. Moreover, we can anticipate that in the future, as ODS levels slowly decline, the observed ozone increase will be considerably greater than that attributable to the ODS recovery.

12334

3 An empirical estimation of the ODS-CO₂ attribution of stratospheric ozone and temperature changes

In principle, it should be possible to calculate the various coefficients in Sect. 2 as a function of latitude, altitude, and season, to provide a theoretical determination of the significance of the ozone-temperature feedback for attribution of stratospheric ozone and temperature changes. However there are technical complications because of non-local coupling within each column of atmosphere. (Note that changes in CO₂ or ODSs at a single altitude are not physically realizable.) Instead, we here provide a simple empirical estimate of the effect, using simulations from the Canadian Middle Atmosphere Model (CMAM) – a fully interactive three-dimensional chemistry climate model (de Grandpré et al., 2000) – and exploiting the strong contrast between the past and future time dependence of the ODSs.

Figure 1 shows the CO₂ and ODS timeseries in the upper stratosphere from CMAM simulations which follow the SPARC CCMVal “REF2” scenario described in Eyring et al. (2005). The behaviour of a number of chemistry climate models, including CMAM, under this scenario is described in Eyring et al. (2007). As can be seen from Fig. 1, both CO₂ and ODSs evolve roughly linearly with time in both the past and the future, with the CO₂ trend increasing in the future and the ODS trend changing sign according to the assumed scenarios. (The inflection point in CO₂ in 2002 arises from the patching together of the past and future components of the scenarios.) Figure 2 shows the global-mean ozone timeseries from CMAM for various altitudes, and Fig. 3 the global-mean temperature timeseries; the results of three ensemble members are shown, each driven by a different sea-surface temperature realization from a coupled atmosphere-ocean model, together with the ensemble mean. The CMAM global-mean ozone and temperature timeseries likewise exhibit strikingly linear behaviour in both past and future, providing some confidence in the attribution of this behaviour to CO₂ and ODS changes, as argued in Sect. 2. (Note that while the atmospheric temperature response to CO₂ increases is not expected to be linear in the troposphere, because of saturation

12335

effects it is expected to be linear in the middle atmosphere (Shine et al., 2003).)

For both ozone and temperature, the contrast between past and future is different for different altitudes. These differences reflect the different sensitivity to CO₂ and ODS changes at different altitudes, and can be exploited as follows to isolate those sensitivities. Based on these figures, we identify two periods of near-linear changes: 1975–1995, during the period of ozone depletion, and 2010–2040, during the period of ozone recovery. We assume that, during each period, the ozone and temperature changes can be entirely explained in terms of the CO₂ and ODS changes; thus, we can decompose the past changes (over 1975–1995) according to

$$\Delta T^{\text{past}} = \Delta T_{\text{CO}_2}^{\text{past}} + \Delta T_{\text{ODS}}^{\text{past}}, \quad (15)$$

and the future changes (over 2010–2040) according to

$$\Delta T^{\text{future}} = r \Delta T_{\text{CO}_2}^{\text{past}} - s \Delta T_{\text{ODS}}^{\text{past}}, \quad (16)$$

and similarly for the ozone changes. Here r is the ratio of the CO₂ increase over 2010–2040 to that over 1975–1995 (approximately given by 2.0), while s is the ratio of the ODS decrease over 2010–2040 to the increase over 1975–1995 (approximately given by 0.36). One can then solve for the past changes attributable to CO₂ and ODS changes from (15)–(16), i.e.

$$\Delta T_{\text{CO}_2}^{\text{past}} = \frac{s \Delta T^{\text{past}} + \Delta T^{\text{future}}}{s + r} \quad (17)$$

and

$$\Delta T_{\text{ODS}}^{\text{past}} = \frac{r \Delta T^{\text{past}} - \Delta T^{\text{future}}}{s + r} \quad (18)$$

(and similarly for ozone), where the right-hand sides of (17) and (18) are taken from the simulated changes. The future temperature changes attributable to CO₂ and ODS changes are given by $r \Delta T_{\text{CO}_2}^{\text{past}}$ and $-s \Delta T_{\text{ODS}}^{\text{past}}$, respectively.

12336

The results of these calculations are shown in Fig. 4 for ozone, and Fig. 5 for temperature, expressed in terms of the trend per decade and plotted versus altitude. Only results above 100 hPa are shown, as this approach is not expected to be viable at lower altitudes. Before discussing the attribution to CO₂ and ODS changes, we first compare the modeled ozone and temperature trends for the past with observations, in order to establish the credibility of the CMAM results.

The CMAM ozone trends for the past (Fig. 4a) are in good agreement with the observations. In Chapter 3 of WMO (2007), ozone trends were expressed in terms of %/decade during the 1980s, when ODSs were increasing linearly with time. Thus, those trends are directly comparable with those presented here. However it must be borne in mind that the CMAM trends are at fixed pressure, while the observed trends may be at fixed pressure (e.g. SBUV/(2)) or fixed altitude (e.g. SAGE); the latter tends to increase the magnitude of the trends in the upper stratosphere. While global-mean trends were not presented in WMO (2007), the observed midlatitude trends are seen to be approximately characteristic of the global mean (Figs. 3–7 of WMO, 2007), and peak (for SBUV/(2)) at about 6%/decade at 2 hPa and 4%/decade at 100 hPa, with a minimum around 20 hPa (Figs. 3–8 of WMO, 2007). These values are very consistent with the CMAM values.

A comparison of the CMAM temperature trends for the past (Fig. 5a) with observations is challenging, because of the significant uncertainty in the vertical profile of past global-mean stratospheric temperature changes (Chap. 5 of WMO, 2007). Shine et al. (2003) considered both non-interactive models, which had the ozone changes imposed, and interactive chemistry climate models. Both kinds of models gave a vertical profile of the total cooling trend that is quite similar to that exhibited by CMAM, with a principal maximum near 1 hPa, a broad minimum around 20 hPa, and a weak secondary maximum at about 70 hPa. Overall, the magnitude of the CMAM cooling is only about 2/3 as large as the “model mean” of the non-interactive models considered by Shine et al. (2003). However, the individual models show a large range of values. The maximum CMAM cooling of 1.3 K/decade at 1 hPa is quite consistent

12337

with the other chemistry climate models considered by Eyring et al. (2007), as well as with the interactive models considered by Shine et al. (2003). In Chapter 5 of WMO (2007), the model results of Shine et al. (2003, both interactive and non-interactive) were considered to be broadly consistent with the observations, given the error bars and other uncertainties, and the assessment of the observations continues to evolve (W. J. Randel, personal communication, 2007).

We now turn to the issue of attribution. Looking first at the ozone changes (Fig. 4a), the two distinct maxima in the past decreases are both seen to be mainly attributable to ODS changes, although there is a small contribution from CO₂ changes at about the 10% level (i.e. 10% of the ozone changes are attributable to CO₂ rather than ODS changes). In the upper stratosphere, as expected from Sect. 2, the CO₂-induced ozone changes have acted to slightly mask the full extent of the ODS-induced ozone decrease, with the difference between the actual and the ODS-attributable global-mean ozone decrease being statistically significant. Nevertheless on the whole the small contribution of CO₂ changes to the ozone changes justifies the approach generally taken to attribute past changes (e.g. Chap. 5 of WMO, 2007). Interestingly, in the lower stratosphere the CO₂ changes apparently acted to decrease ozone in the past, although in this region the difference between the actual and the ODS-attributable global-mean ozone decrease is not statistically significant.

In contrast, the future ozone changes (Fig. 4b) are significantly affected by CO₂ changes, with the upper stratospheric ozone recovery over 2010–2040 coming roughly 3/5 from the decline in ODS abundance and roughly 2/5 from the increase in CO₂. This means that the maximum positive trend in ozone at 2 hPa is fully 2/3 of the magnitude of the maximum negative trend over 1975–1995 (i.e. 4% compared with 6%), even though the ODS decline is much slower than the ODS increase. In the lower stratosphere, the CO₂ and ODS effects are seen to largely cancel each other.

Turning now to temperature, the past changes (Fig. 5a) show a CO₂-attributable cooling with a smooth vertical profile which, as expected, roughly reflects the profile of temperature itself. However it is notable that the maximum CO₂-attributable

12338

cooling is only about 0.6 K/decade, and peaks around 0.5 hPa, as compared with a maximum CO₂-induced cooling of about 0.8 K/decade peaking closer to 1 hPa for the non-interactive models considered by Shine et al. (2003). The magnitude of this difference is consistent with the magnitude of the ozone-temperature feedback in CMAM (Jonsson et al., 2004) (and, indeed, the interactive models in Shine et al. (2007) gave a substantially smaller maximum cooling than the non-interactive models). The ODS-attributable cooling has two distinct maxima, essentially coincident with the maxima in ODS-attributable ozone loss during the same period (Fig. 4a). Overall, this picture largely confirms the traditional attribution of stratospheric cooling to a combination of CO₂ and ODS-induced ozone depletion, since the CO₂-induced ozone changes have been a small effect over this time period, although the CO₂-induced cooling at the stratopause appears to have been somewhat overestimated.

In contrast, the future temperature changes (Fig. 5b) are dominated by the effects of CO₂ changes (both direct, and indirect via ozone). ODS-attributable ozone recovery induces a warming in the vicinity of the stratopause, maximizing at about 0.3 K/decade around 1 hPa, and this leads to a “bite” in the overall cooling profile at the stratopause. This bite is thus likely to be the only attributable signature in stratospheric temperature changes of ODS-induced ozone recovery.

4 Conclusions

In this paper we have revisited the traditional approach (e.g. Ramaswamy et al., 2001; Shine et al. 2003) of attributing global-mean stratospheric temperature changes to a combination of CO₂ and ozone changes. In light of the strong ozone-temperature coupling that exists in the upper stratosphere (where the stratospheric cooling is the greatest), whereby CO₂-induced cooling acts to increase ozone through a reduction in the efficiency of chemical ozone destruction, it is argued that the attribution of temperature changes should be framed instead in terms of changes in CO₂ and ozone-depleting substances (ODSs), which are the true anthropogenic forcing agents. Although the

12339

differences between CO₂-ozone and CO₂-ODS attribution can in principle be considerable, an empirical estimation of the importance of ozone-temperature coupling for attribution demonstrated that the differences are not very large when considering changes over the period 1975–1995, when stratospheric ODS abundances were increasing most rapidly. Nevertheless, CO₂-induced cooling reduced upper stratospheric ozone depletion by a factor of approximately 10% over this period, when compared with what would have been expected based on the ODS increases alone. The upper stratospheric cooling due to CO₂ has thus been overestimated, and that due to ODS-induced ozone depletion underestimated, compared with the traditional attribution approach.

However, the problem of identifying stratospheric ozone depletion has recently evolved to that of identifying the onset of ozone recovery, as stratospheric ODS levels begin to slowly decline (see Chap. 6 of WMO, 2007). As the relative importance of ODS changes decreases, the importance of ozone-temperature coupling increases, and it will no longer be viable to retain the traditional CO₂-ozone approach to stratospheric temperature attribution. (Or, to be precise, the traditional approach will require further attribution.) Rather, it will become necessary to consider the combined ozone-temperature response to both CO₂ and ODS changes, and attempt to separately attribute those changes. In particular, during the expected period of the most rapid ODS decrease, from 2010–2040, it is projected that fully 2/5 of the upper stratospheric ozone increase will be attributable to increases in CO₂ rather than to decreases in ODSs. About the only potential signature of ODS-induced ozone recovery in stratospheric temperature will be a “bite” in the profile of stratospheric cooling at the stratopause.

The present analysis has restricted attention to changes in global-mean stratospheric ozone and temperature due to CO₂ and ODS changes, as those have been shown to be the primary forcing agents for past changes and are expected to be the dominant agents in ozone recovery (Chaps. 5 and 6 of WMO, 2007). There are, however, other long-term changes that affect stratospheric ozone and temperature. Whilst the direct contribution of CH₄ and N₂O changes to stratospheric cooling is believed to be small, they could have a more significant effect on ozone chemistry. Water vapour

12340

has also been much discussed as both a radiative and a chemical forcing agent in the stratosphere, although water vapour is not an anthropogenic forcing agent, and any changes in stratospheric water vapour should be considered as an indirect effect of other changes. Within the scope of the present empirical analysis, changes in CH₄ and N₂O, as well as of any stratospheric water vapour changes attributable to climate change, are implicitly buried within the “CO₂” term. In order to identify additional effects beyond those of CO₂ and ODSs, it would be necessary to include a third time period (e.g. the second half of the 21st century), or move to a multiple linear regression analysis (R. Stolarski, personal communication, 2007).

The separability of the CO₂-ODS attribution advocated here relies on the linearity of the ozone-temperature coupling represented in (1)–(2). For the most part, this is believed to be a good approximation over most of the stratosphere. One obvious way in which such linearity would be violated is through heterogeneous chemistry, where ozone loss would be expected to depend multiplicatively on temperature and ODSs. Thus, the present approach – or, for that matter, any linear regression analysis – is unlikely to be very reliable in the lowest part of the stratosphere.

Acknowledgements. This research has been supported by the Canadian Foundation for Climate and Atmospheric Sciences.

References

- de Grandpré, J., Beagley, S. R., Fomichev, V. I., Griffioen, E., McConnell, J. C., Medvedev, A. S. and Shepherd, T. G.: Ozone climatology using interactive chemistry: Results from the Canadian Middle Atmosphere Model, *J. Geophys. Res.*, 105, 26 475–26 491, 2000.
- Eyring, V., Kinnison, D. E., and Shepherd, T. G.: Overview of planned coupled chemistry-climate simulations to support upcoming ozone and climate assessments, *SPARC Newsletter*, 25, 11–17, 2005.
- Eyring, V., Waugh, D. W., Bodeker, G. E., et al.: Multi-model projections of stratospheric ozone in the 21st century, *J. Geophys. Res.*, 112, in press, doi:10.1029/2006JD008332, 2007.

12341

- Fomichev, V. I., Ward, W. E., Beagley, S. R., McLandress, C., McConnell, J. C., McFarlane, N. A., and Shepherd, T. G.: The extended Canadian Middle Atmosphere Model: Zonal-mean climatology and physical parameterisations, *J. Geophys. Res.*, 107(D10), 4087, doi:10.1029/2001JD000479, 2002.
- Haigh, J. D. and Pyle, J. A.: Ozone perturbation in a two-dimensional circulation model, *Q. J. R. Meteorol. Soc.*, 108, 551–574, 1982.
- IPCC/TEAP (Inter-Governmental Panel on Climate Change/Technology and Economic Assessment Panel), 2005: IPCC/TEAP Special Report on Safeguarding the Ozone Layer and the Global Climate System: Issues Related to Hydrofluorocarbons and Perfluorocarbons, 488 pp., Cambridge University Press.
- Jonsson, A. I., de Grandpré, J., Fomichev, V. I., McConnell, J. C., and Beagley, S. R.: Doubled CO₂-induced cooling in the middle atmosphere: Photochemical analysis of the ozone radiative feedback, *J. Geophys. Res.*, 109, D24103, doi:10.1029/2004JD005093, 2004.
- Ramaswamy, V., Chanin, M.-L., Angell, J., et al.: Stratospheric temperature trends: Observations and model simulations, *Rev. Geophys.*, 39, 71–122, 2001.
- Shine, K. P., Bourqui, M. S., Forster, P. M., et al.: A comparison of model-simulated trends in stratospheric temperatures, *Quart. J. Roy. Meteorol. Soc.*, 129, 1565–1588, 2003.
- WMO (World Meteorological Organization): Scientific Assessment of Ozone Depletion: 2006, Global Ozone Research and Monitoring Project–Report No. 50, 572 pp., Geneva, Switzerland, 2007.

12342

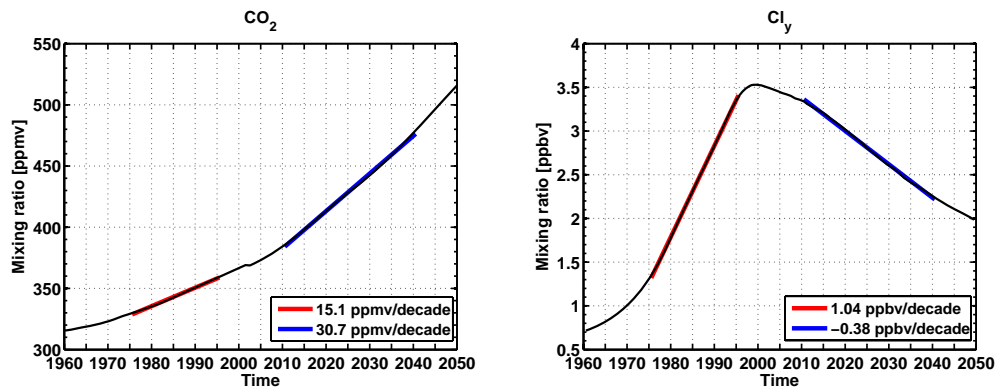


Fig. 1. Annual and global mean timeseries of CO_2 , and of Cl_y (total inorganic chlorine) at 2 hPa, from CMAM. We use upper stratospheric Cl_y as a proxy for ODSs in this analysis since bromine is mainly important for heterogeneous chemistry. (In any case, the bromine source gases are held constant in these simulations.) The thick red and blue lines indicate linear fits to the periods 1975–1995 and 2010–2040, respectively.

12343

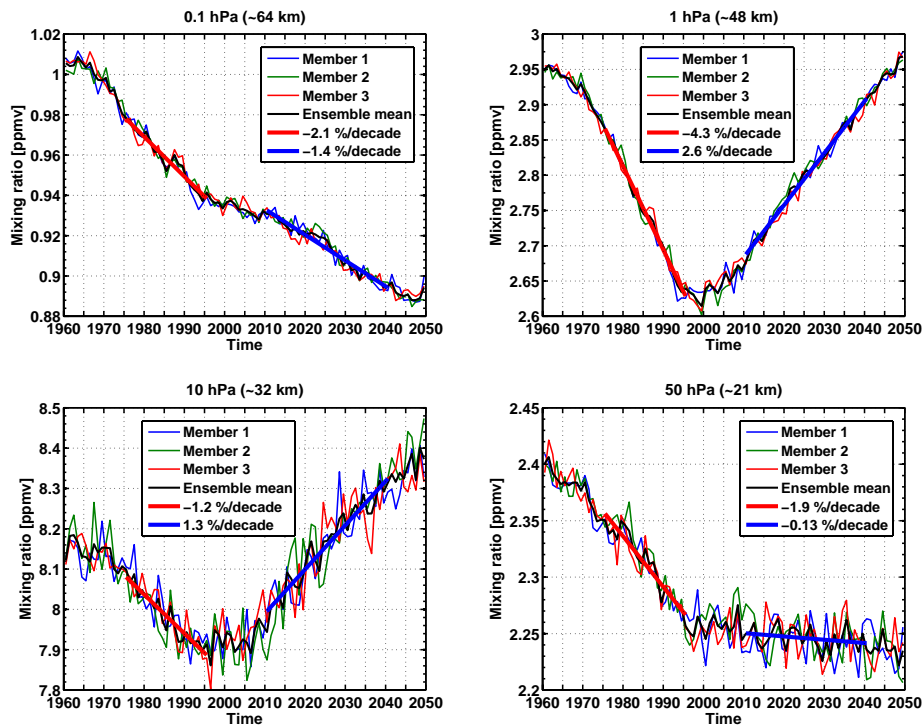


Fig. 2. Annual and global mean timeseries of ozone at 0.1, 1, 10, and 50 hPa (corresponding log-pressure heights are indicated), from CMAM. The thin coloured lines indicate results from three individual ensemble members, the black line shows the ensemble average results, and the thick red and blue lines indicate linear fits to the ensemble mean data for the periods 1975–1995 and 2010–2040, respectively.

12344

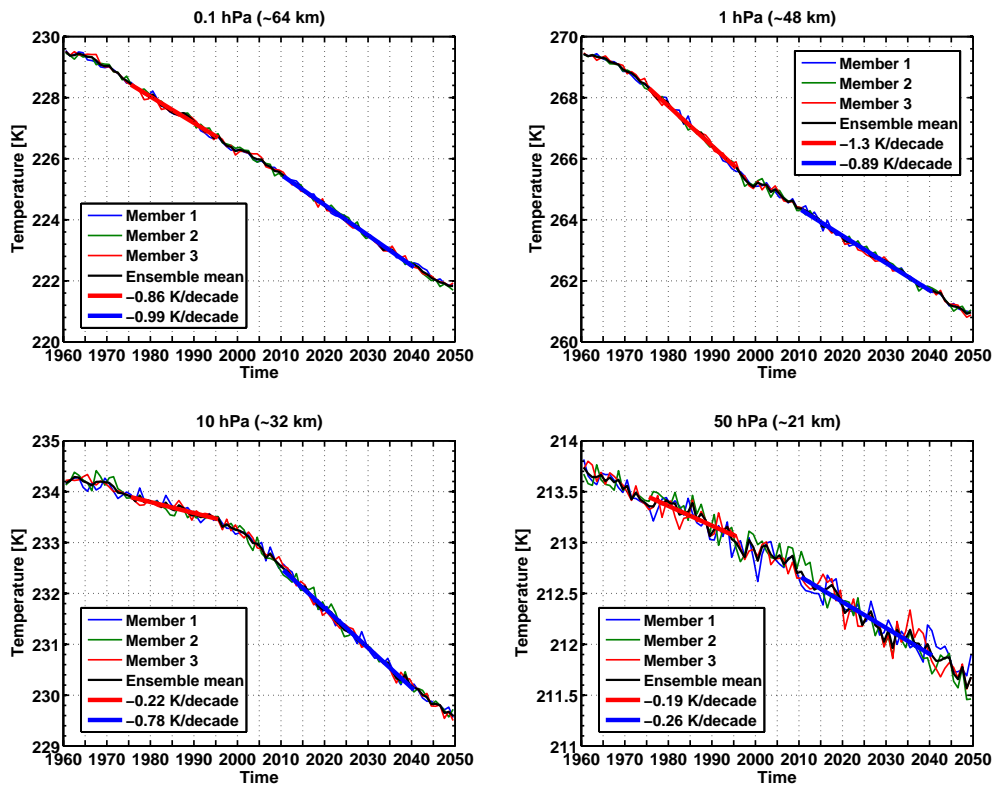


Fig. 3. Same as Fig. 2 but for temperature.

12345

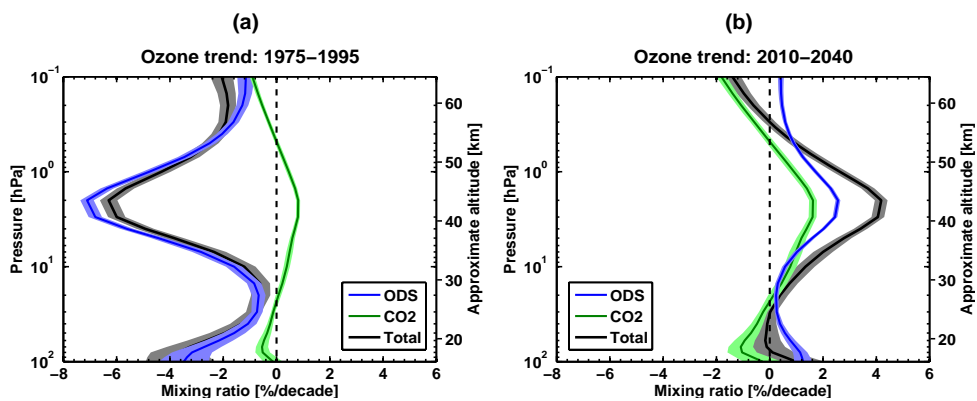


Fig. 4. Attribution of ozone changes for the past (1975–1995) and future (2010–2040) periods. The contributions of CO₂ and ODSs to the overall ozone changes for the selected periods are shown in green and blue, respectively, while the total trends are shown in black/grey. The shaded areas indicate the 99% confidence intervals for the linear fits in Figs. 2 and 3 propagated through Eqs. (17)–(18). The approximate altitudes given on the right-hand side vertical axes are log-pressure heights assuming a constant vertical scale height of 7 km.

12346

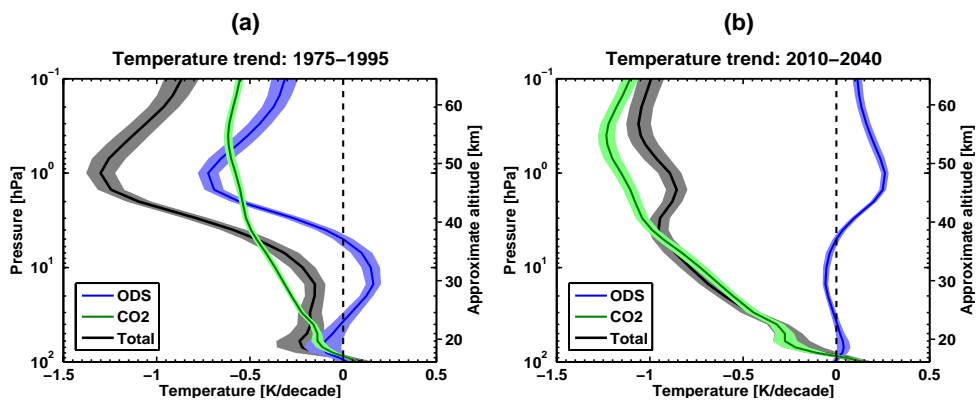


Fig. 5. Same as Fig. 4 but for temperature.